

Restoring the Sonneveld House 1933-2001, 'As if nothing has happened'



Mendrisio, October 6th, 2011

Introduction

Joris Molenaar

Molenaar & Van Winden *architecten*



Molenaar & Van Winden *architecten*

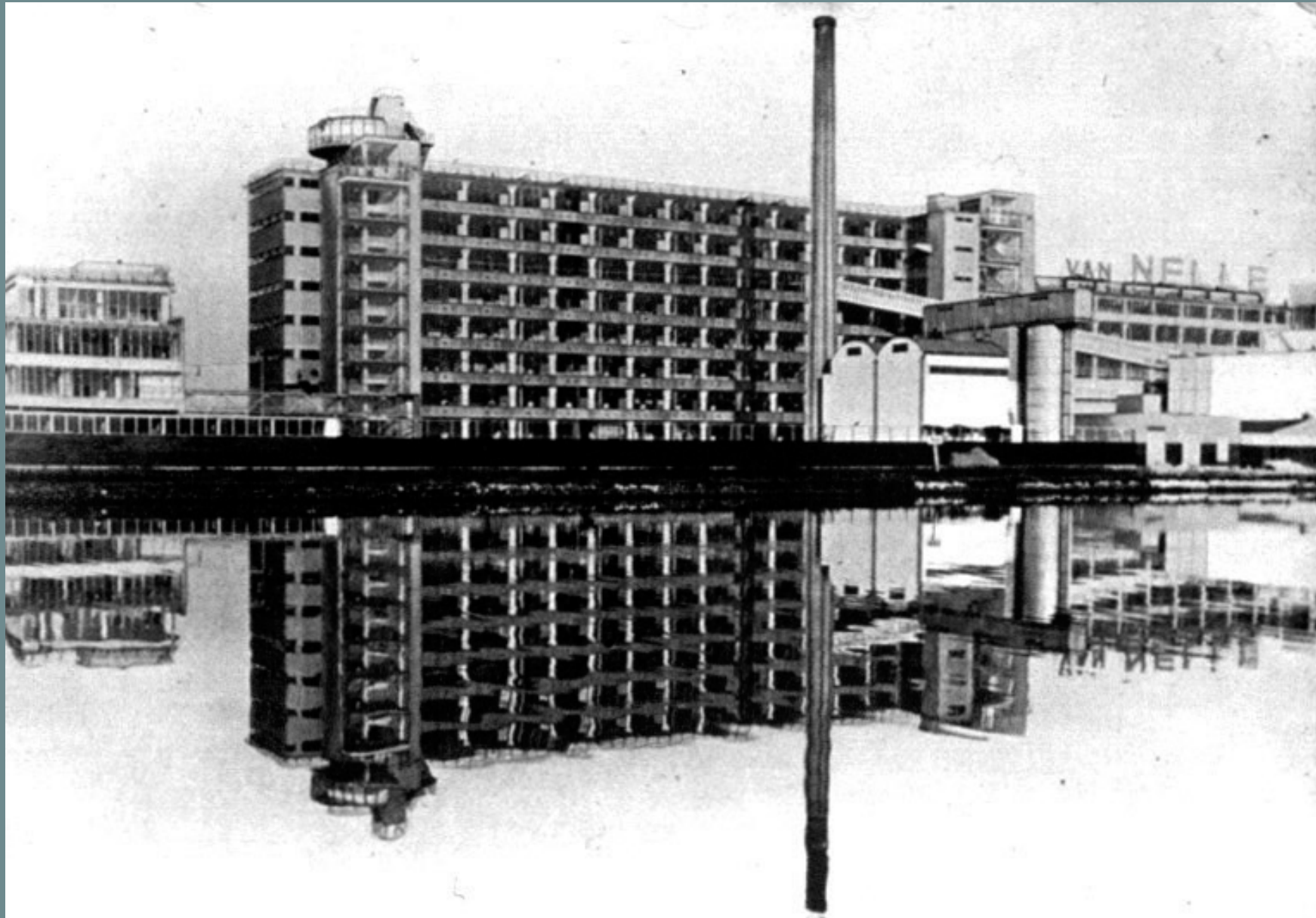
Introduction - Sonneveld House, 2010



Introduction - Fam. Sonneveld in the garden, 1936



Introduction - Van Nelle factory, 1930



Introduction - The board of Van Nelle, 1925



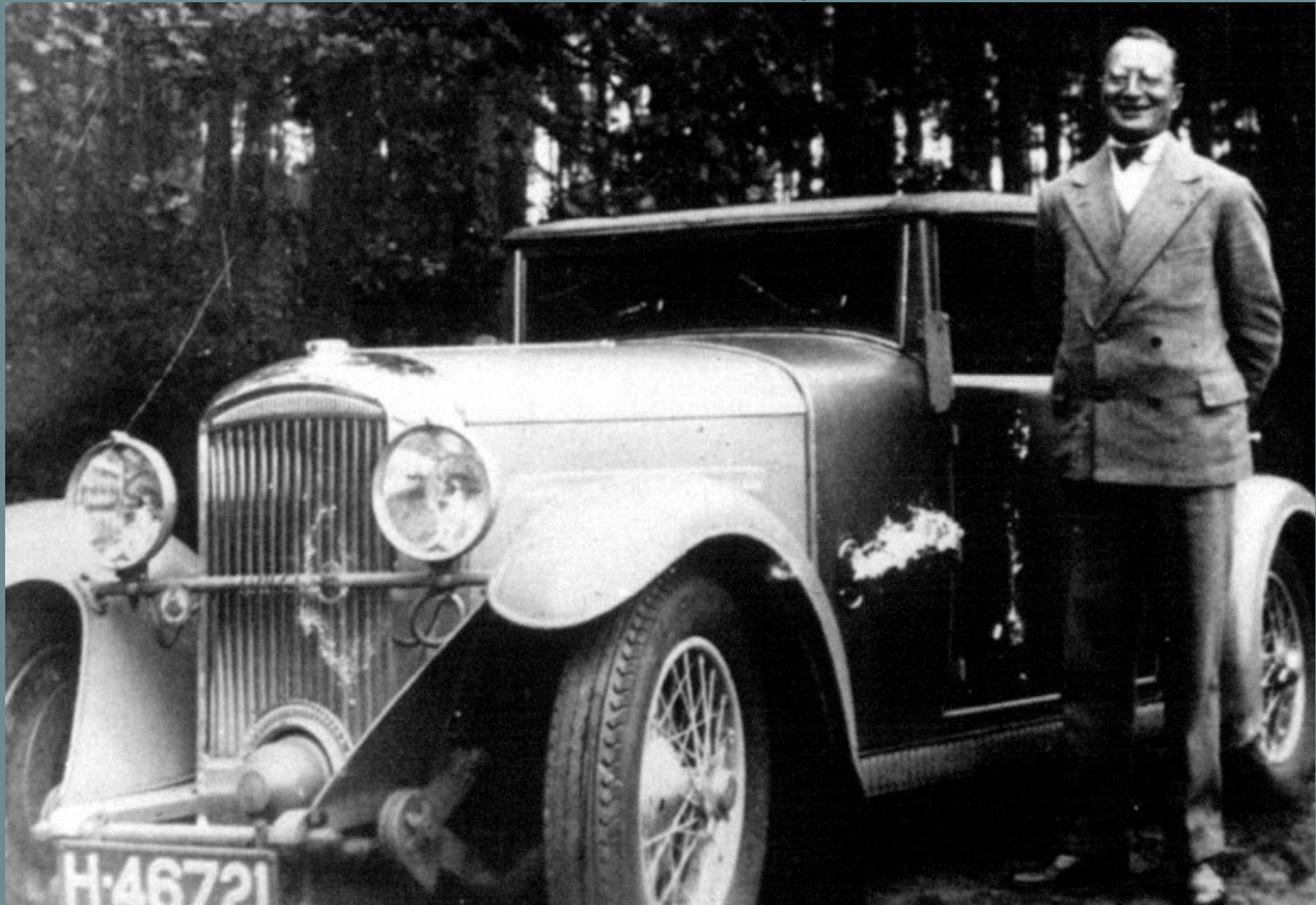
Introduction - van der Leeuw House, 1930



Introduction - van der Leeuw House, 1930



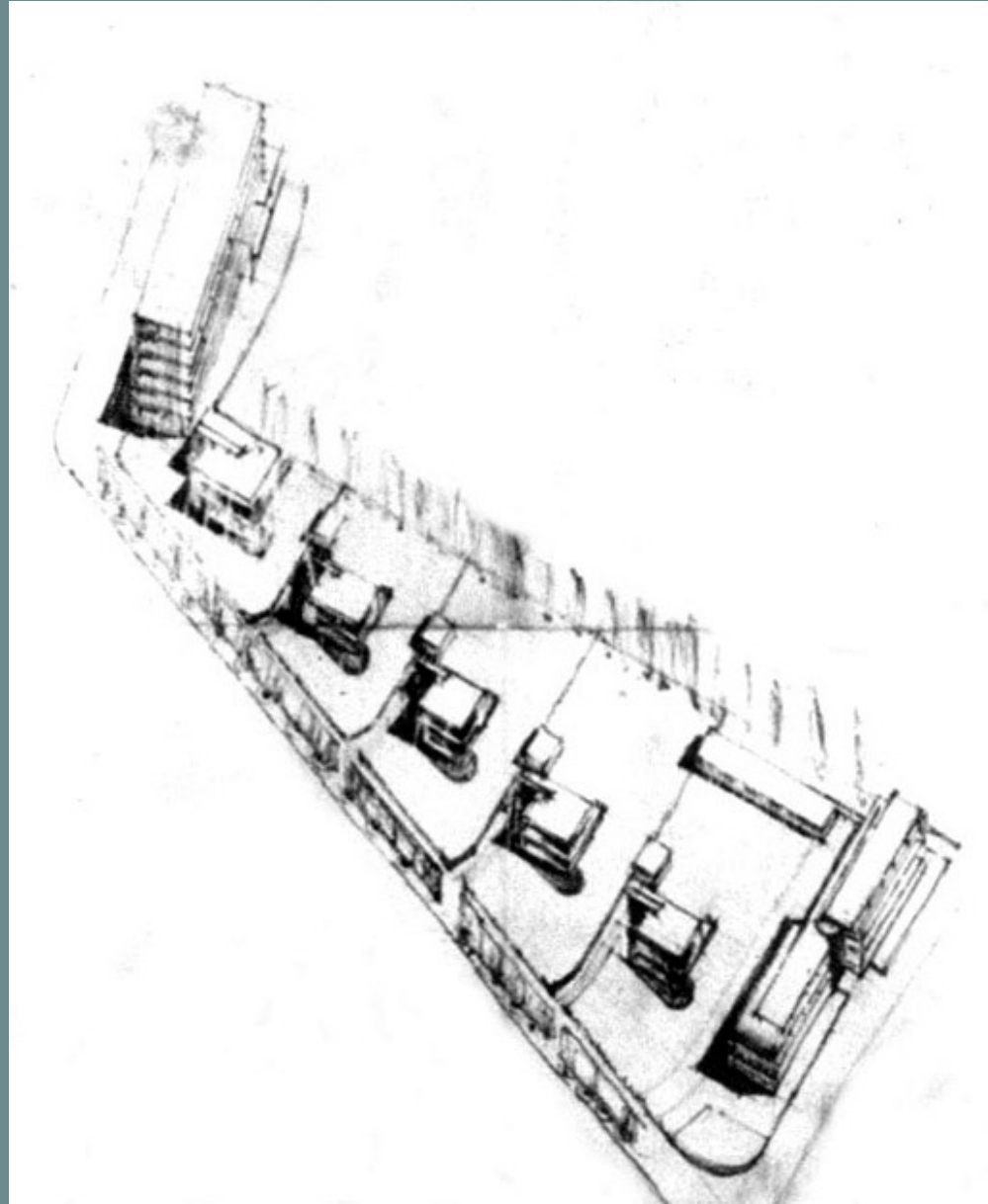
Introduction - Mr. L.C. van der Vlugt, architect, ca. 1930



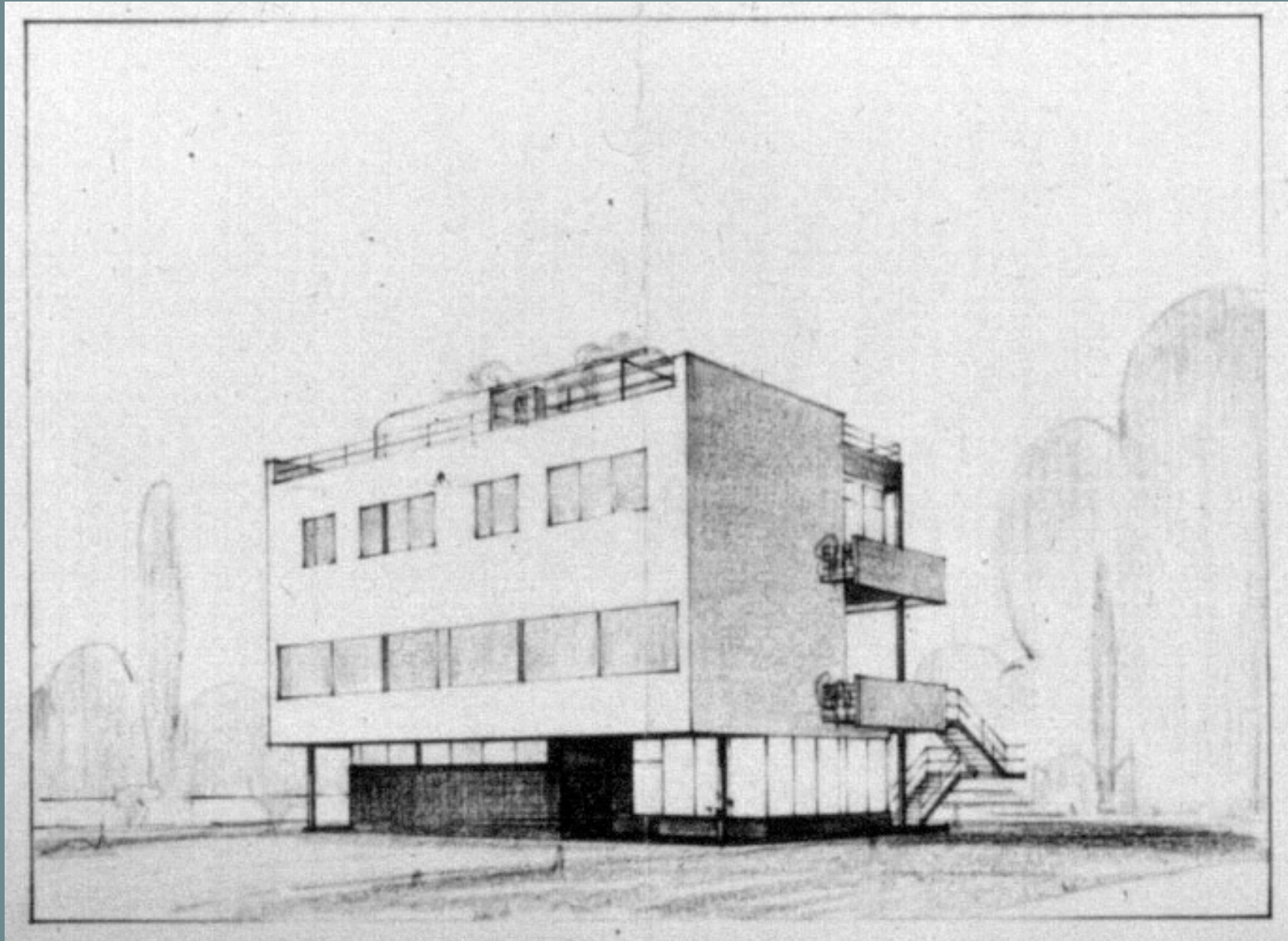
Introduction - Plan Hoboken/Dijkzigt, 1927



Introduction - Villaplan Dijkzicht, 1931



Introduction - Sonneveld House perspective, 1932



Introduction - Sonneveld House, 1933



The documentary - Sleeping Beauty' exterior, 1997



The documentary - 1st serial produced tubular steel Gispén

OORSPRONKELIJKE INVENTARIS HUIS SONNEVELD

Molenaar & Van Winden *architecten*
Maerten Trompstraat 25
2628 RC Delft
015 2568444

LOSSE MEUBELN



The documentary - Sonneveld House, original interior



The documentary - Bombardment on Rotterdam, May 1940

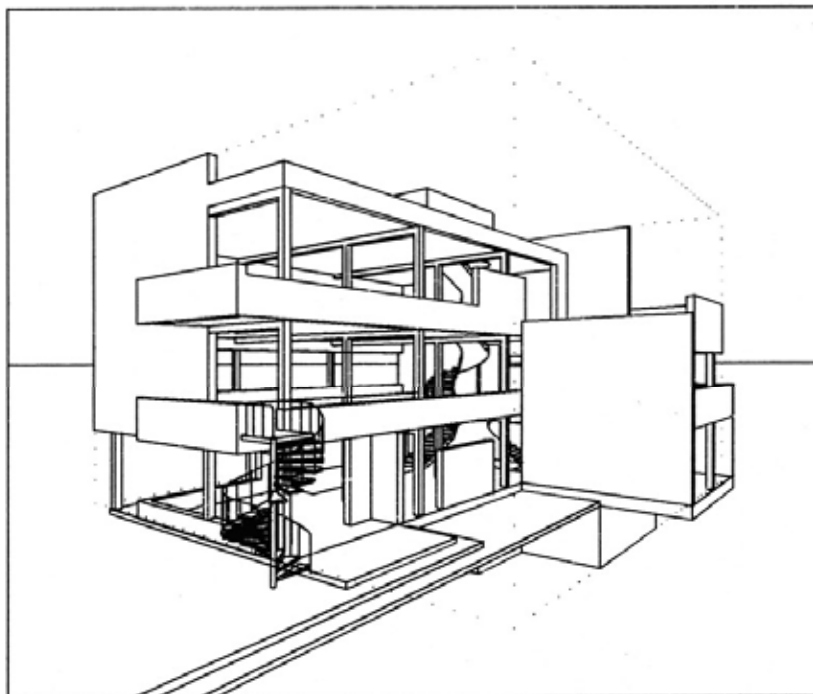


The documentary - Inventory Sonneveld House, 1998

INVENTARISATIE HUIS SONNEVELD

I.O.V. STICHTING VOLKSKRACHT HISTORISCHE MONUMENTEN te ROTTERDAM

DEEL 2: TEKENINGEN



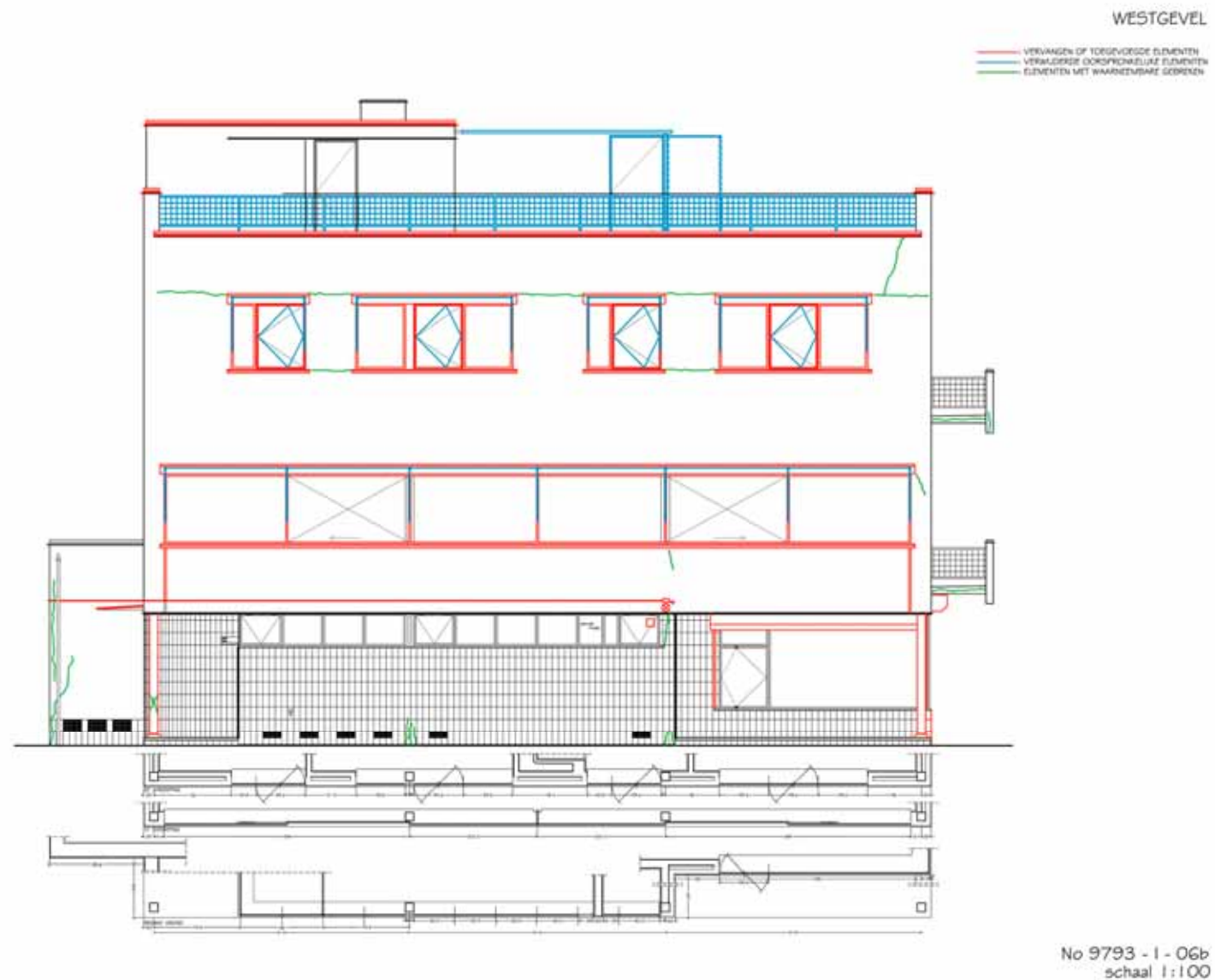
Molenaar & Van Winden, *architecten*

Maarten Trompstraat 25, 2628 RC Delft
fax 015-2578859, telefoon 015-2568444

14 april 1998

definitief 6 september 1998

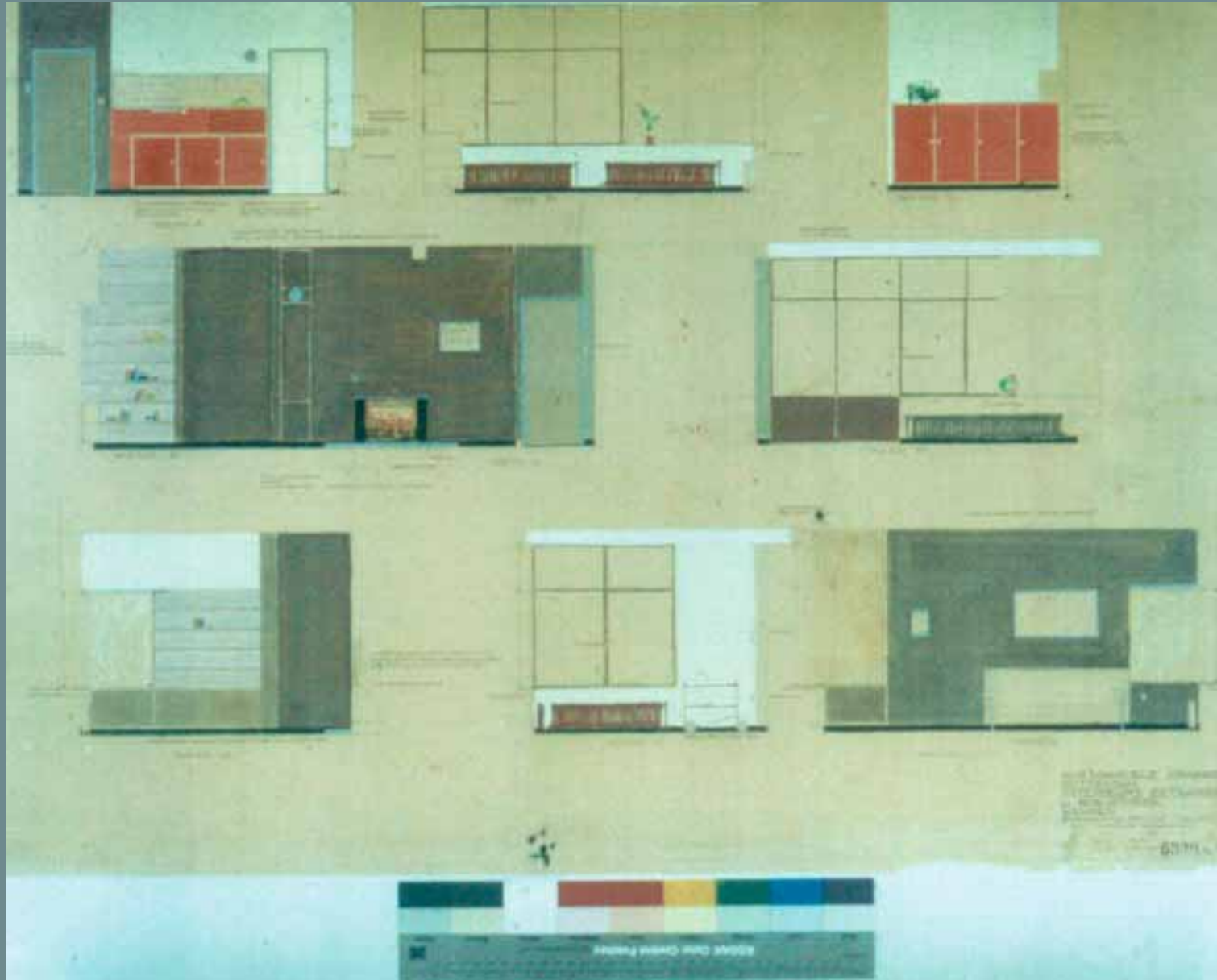
The documentary - Western façade, 1998



The documentary - The Living room



The documentary - Researching the Livingroom

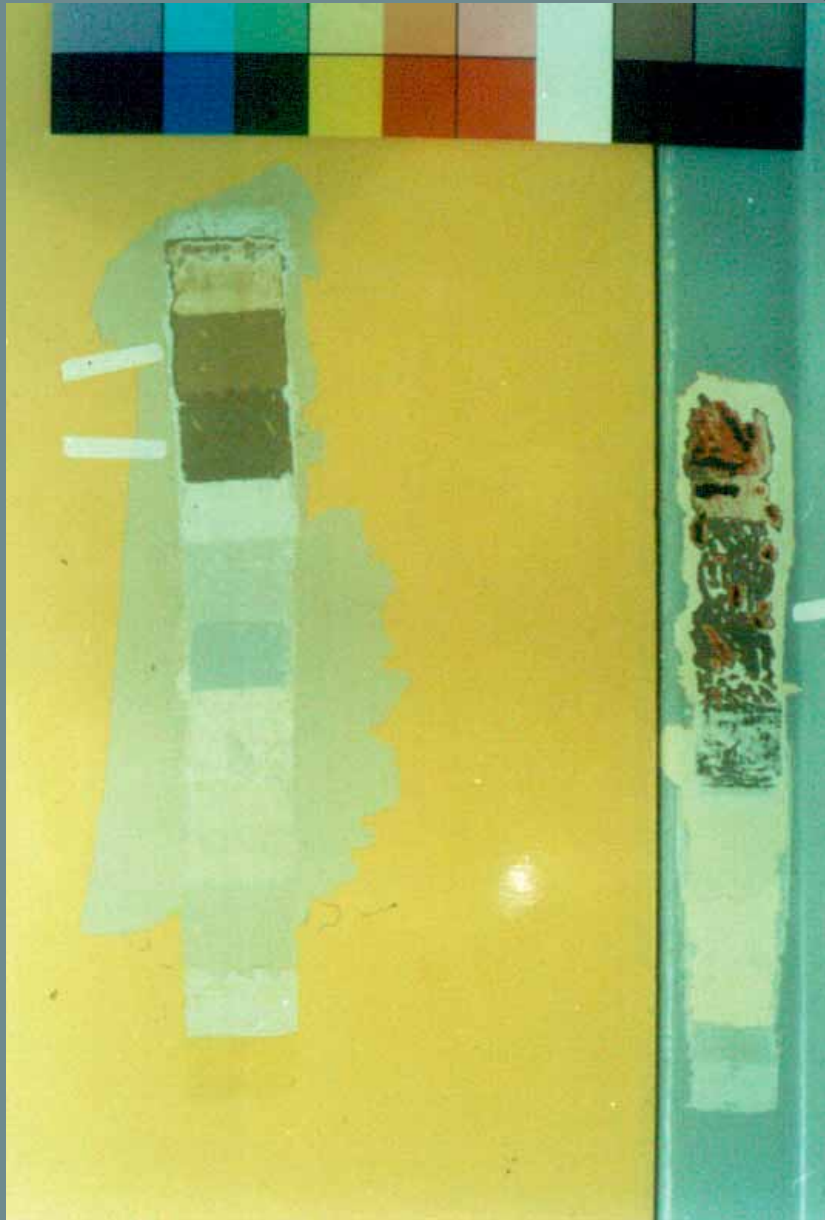


The documentary - Researching the Livingroom

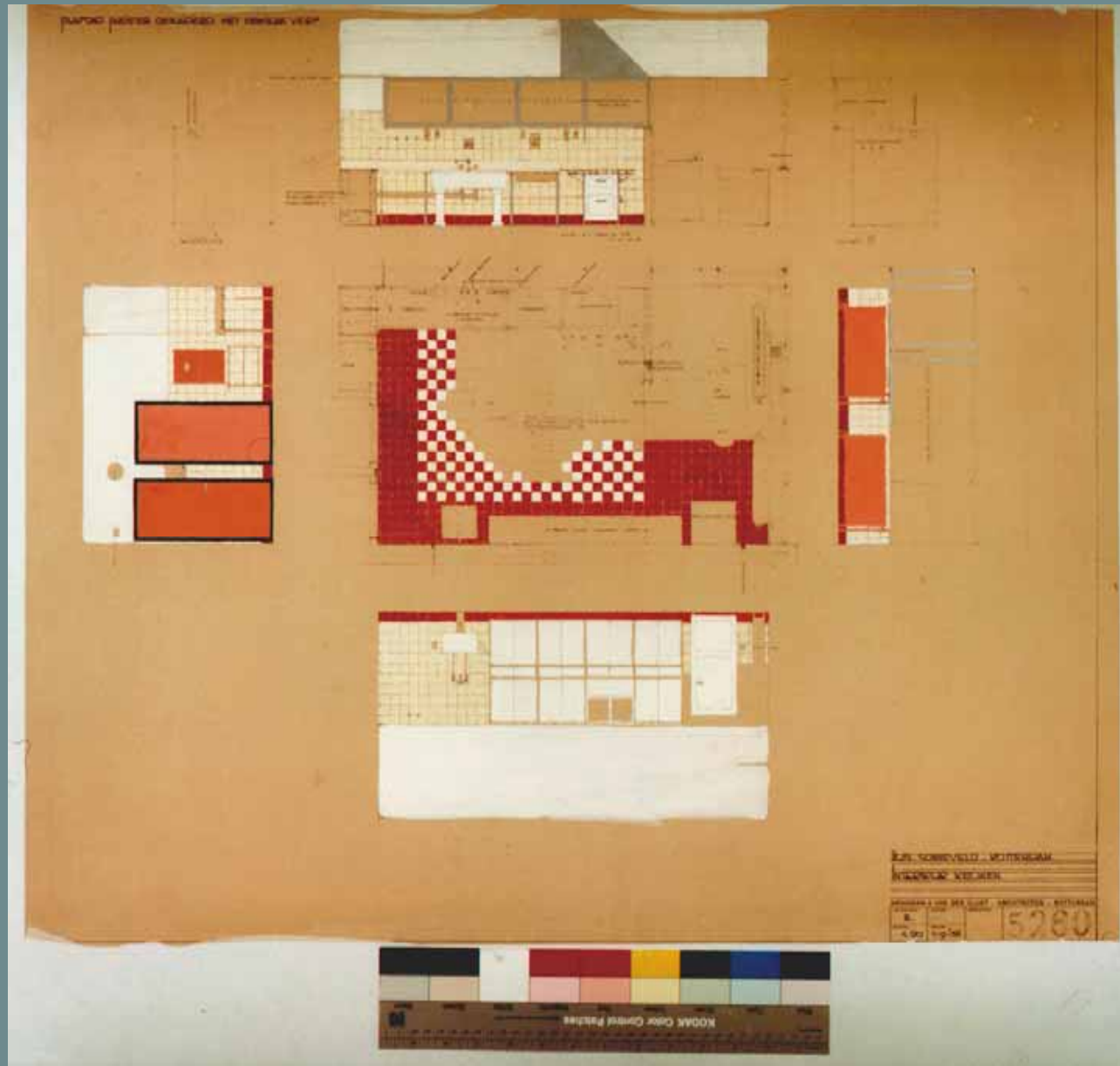


BIBLIOTHEEK EN EETKAMER VANUIT ZITKAMER

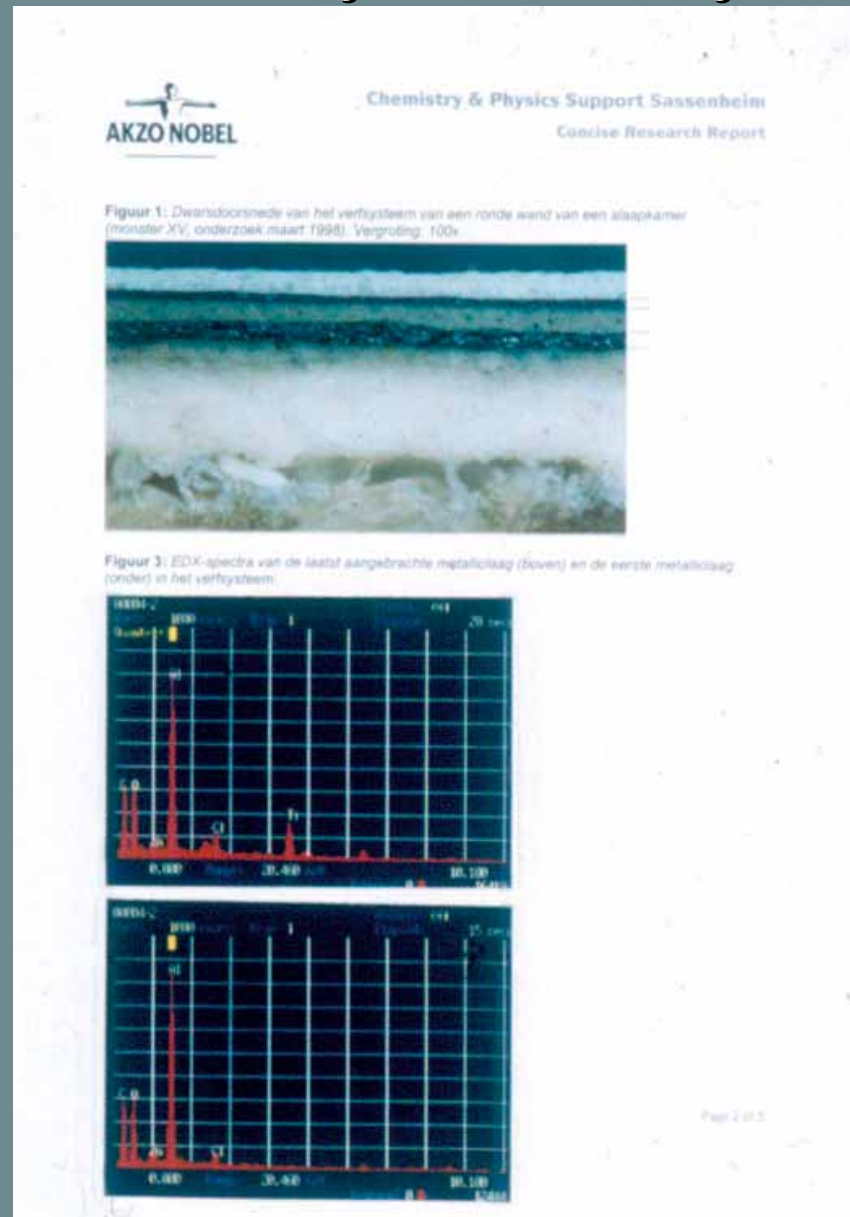
The documentary - Research in the house



Decisions on what to keep and how to preserve



The documentary - Laboratory research



Decisions on what to keep and how to reconstruct



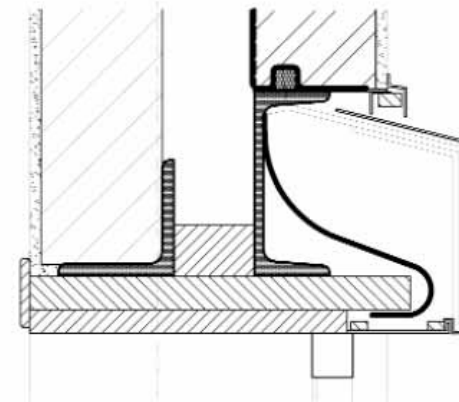
Decisions on what to keep and how to reconstruct



aluminium raam voor restauratie



Logeerkamer in ontakelde staat



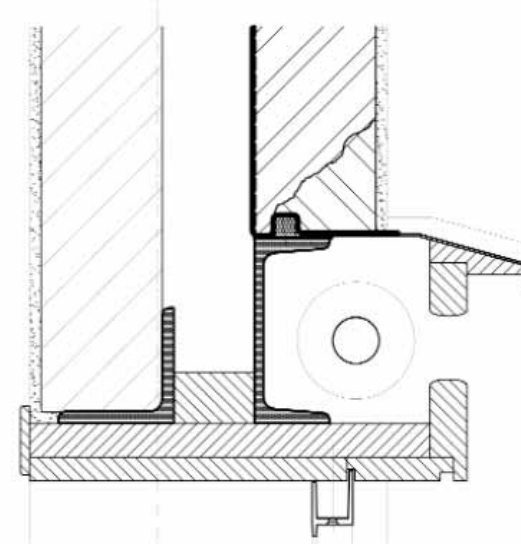
voor restauratie



aantasting stalen binten in ophanging zonwering

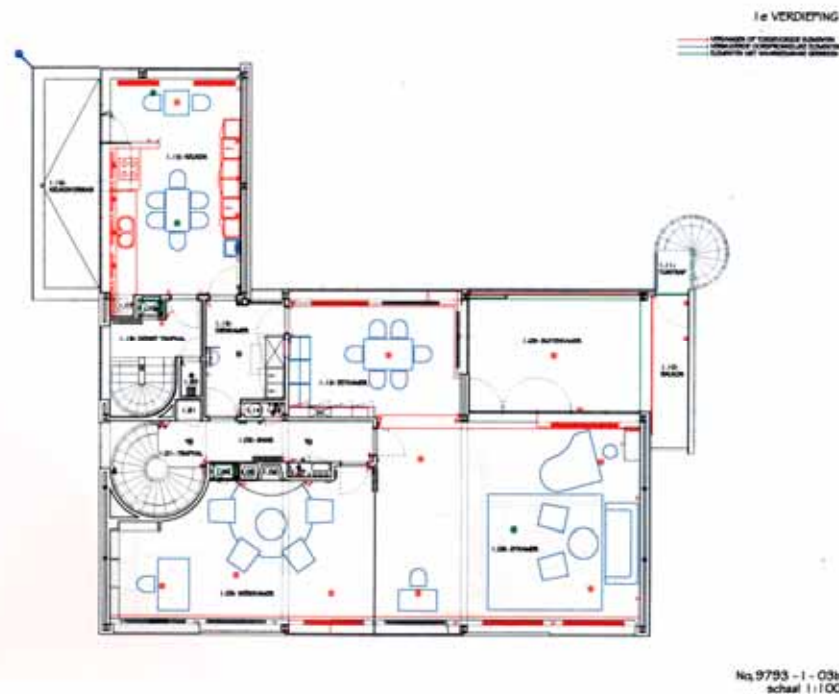


inbrengen nieuwe stalen lekdorpel



na restauratie

Decisions on what to keep and how to reconstruct



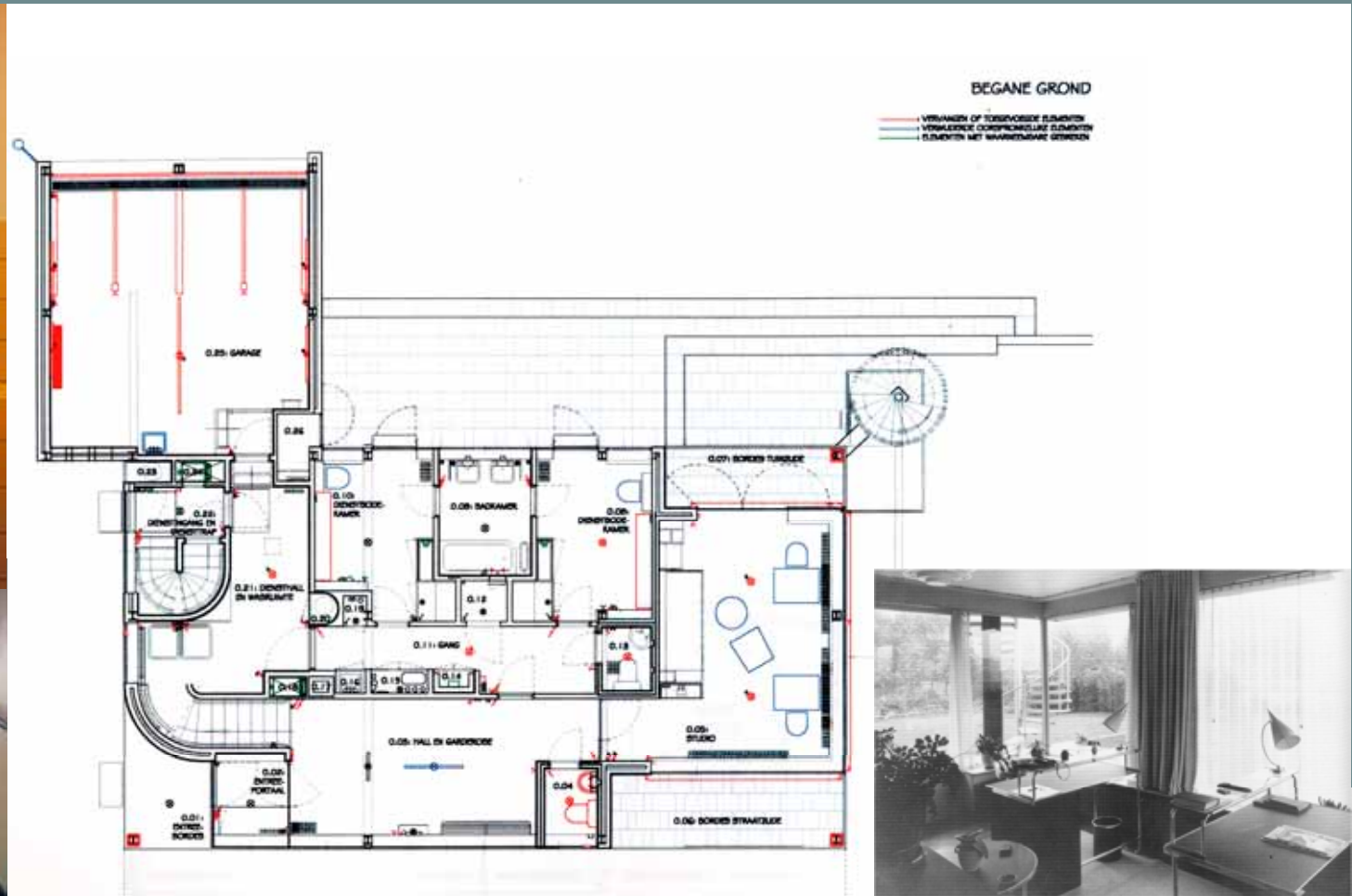
Decisions on what to keep and how to reconstruct



Decisions on what to keep and how to reconstruct



Decisions on what to keep and what to reconstruct

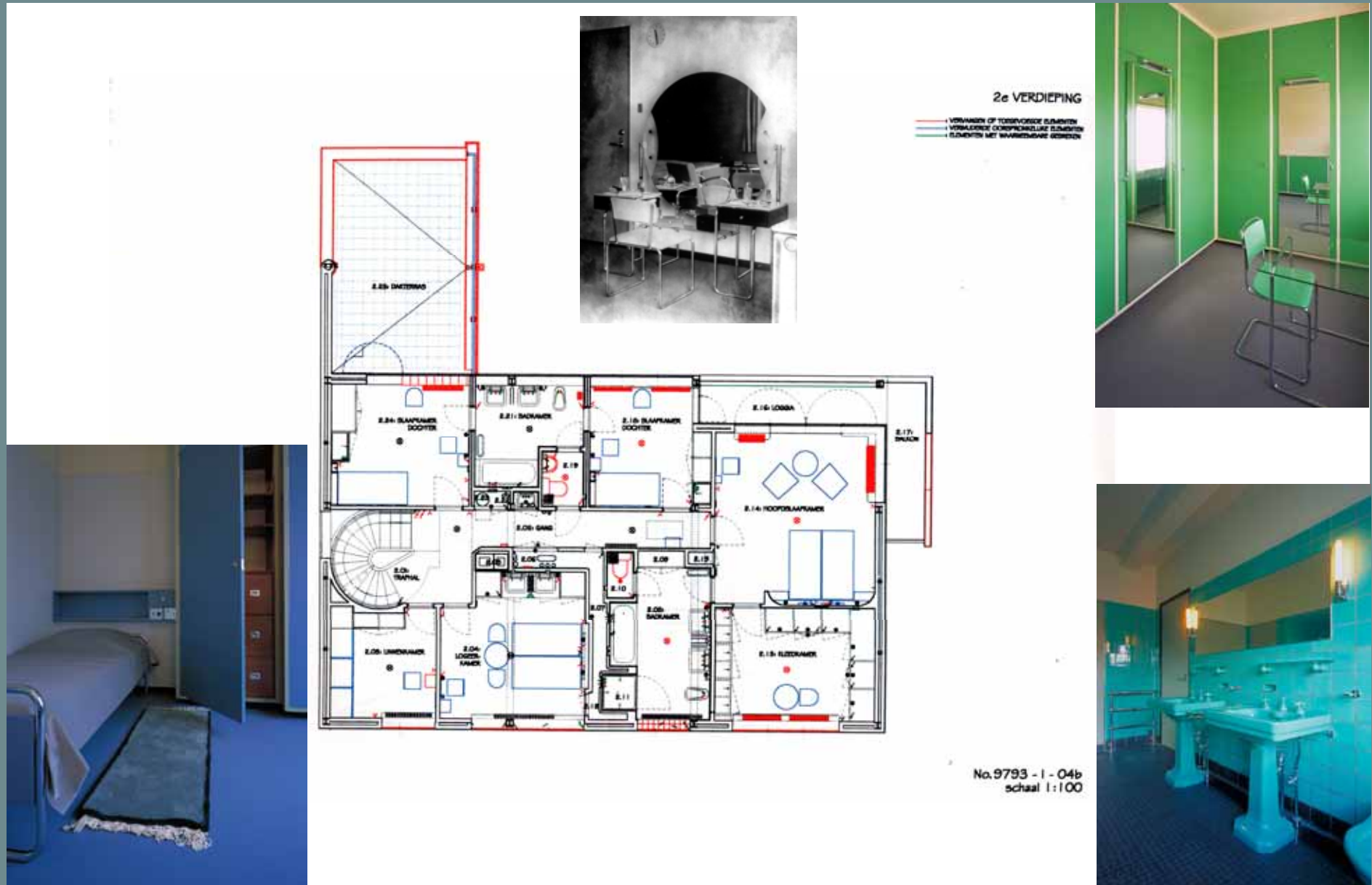


No.9793 - 1 - 02b
schaal 1:100

Decisions on what to keep and what to reconstruct



Decisions on what to keep and what to reconstruct



Changes made necessary: Informationdesk in Entrancehall, 2001



Changes made necessary: Counter with display facilities, 2011



Picture overview



Picture overview



Picture overview



Picture overview



Picture overview



Picture overview



Picture overview



Picture overview



Picture overview



Picture overview



Picture overview



Picture overview



Molenaar & Van Winden *architecten*

Funding management and maintenance



The Sonneveld House, Rotterdam



Molenaar & Van Winden *architecten*